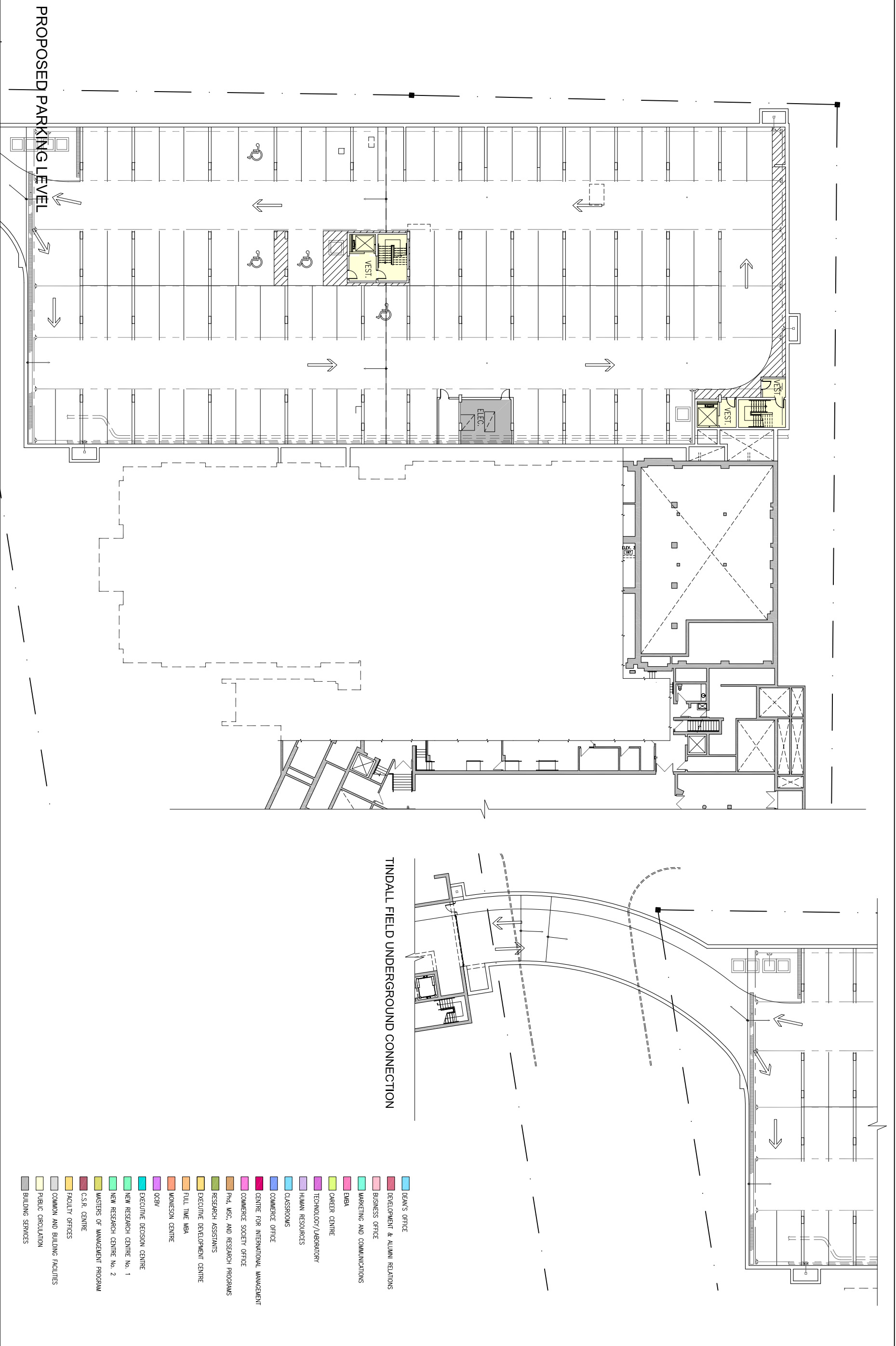




Scale: 1:400  
March 18, 2011

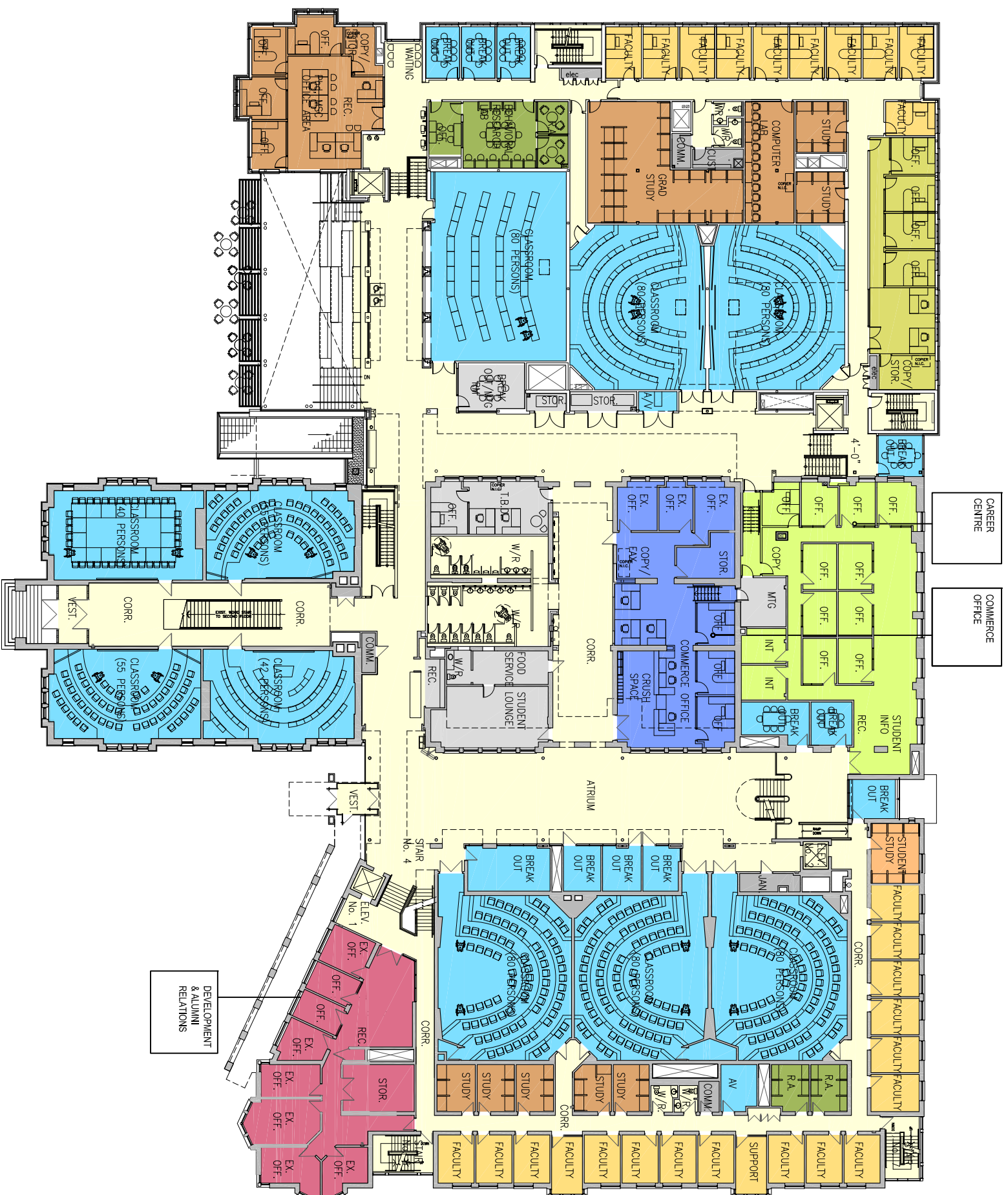


QUEEN'S UNIVERSITY  
GOODES HALL EXPANSION

**+VVG** ARCHITECTS  
THE VENTIN GROUP LTD

- DEAN'S OFFICE
- DEVELOPMENT & ALUMNI RELATIONS
- BUSINESS OFFICE
- MARKETING AND COMMUNICATIONS
- EMBA
- CAREER CENTRE
- TECHNOLOGY/LABORATORY
- HUMAN RESOURCES
- CLASSROOMS
- COMMERCE OFFICE
- CENTRE FOR INTERNATIONAL MANAGEMENT
- COMMERCE SOCIETY OFFICE
- PH.D. M.Sc. AND RESEARCH PROGRAMS
- RESEARCH ASSISTANTS
- EXECUTIVE DEVELOPMENT CENTRE
- FULL TIME MBA
- MONKSON CENTRE
- OCBY
- EXECUTIVE DECISION CENTRE
- NEW RESEARCH CENTRE No. 1
- NEW RESEARCH CENTRE No. 2
- MASTERS OF MANAGEMENT PROGRAM
- C.S.R. CENTRE
- FACULTY OFFICES
- COMMON AND BUILDING FACILITIES
- PUBLIC CIRCULATION
- BUILDING SERVICES





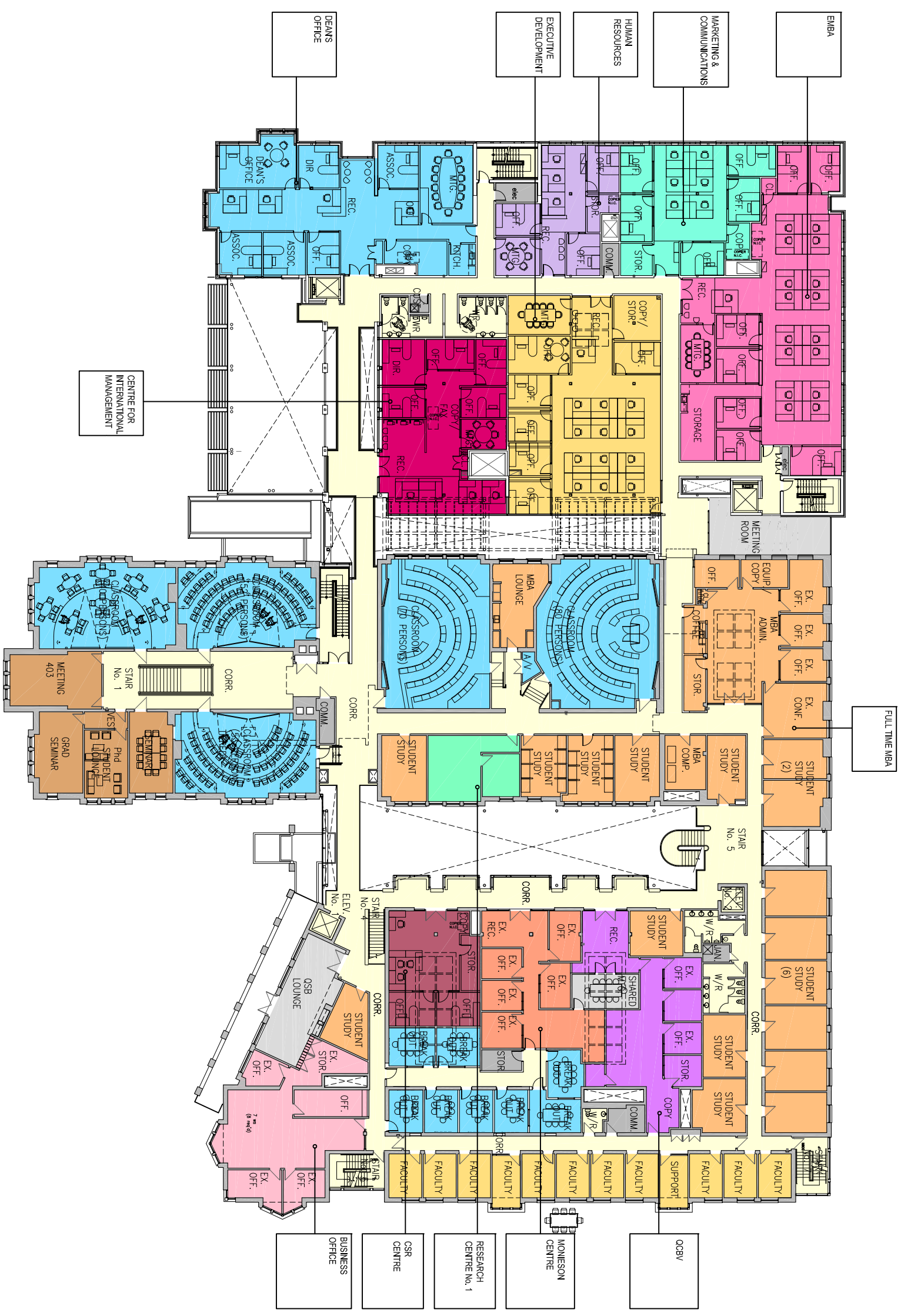
- DEAN'S OFFICE
- DEVELOPMENT & ALUMNI RELATIONS
- BUSINESS OFFICE
- MARKETING AND COMMUNICATIONS
- EMBA
- CAREER CENTRE
- TECHNOLOGY/LABORATORY
- HUMAN RESOURCES
- CLASSROOMS
- COMMERCE OFFICE
- CENTRE FOR INTERNATIONAL MANAGEMENT
- COMMERCE SOCIETY OFFICE
- PH.D., M.Sc. AND RESEARCH PROGRAMS
- RESEARCH ASSISTANTS
- EXECUTIVE DEVELOPMENT CENTRE
- FULL TIME MBA
- MONIESON CENTRE
- OCBV
- EXECUTIVE DECISION CENTRE
- NEW RESEARCH CENTRE No. 1
- NEW RESEARCH CENTRE No. 2
- MASTERS OF MANAGEMENT PROGRAM
- C.S.R. CENTRE
- FACULTY OFFICES
- COMMON AND BUILDING FACILITIES
- PUBLIC CIRCULATION
- BUILDING SERVICES

PROPOSED 300 LEVEL



Scale: 1:400  
March 18, 2011

QUEEN'S UNIVERSITY  
GOODES HALL EXPANSION



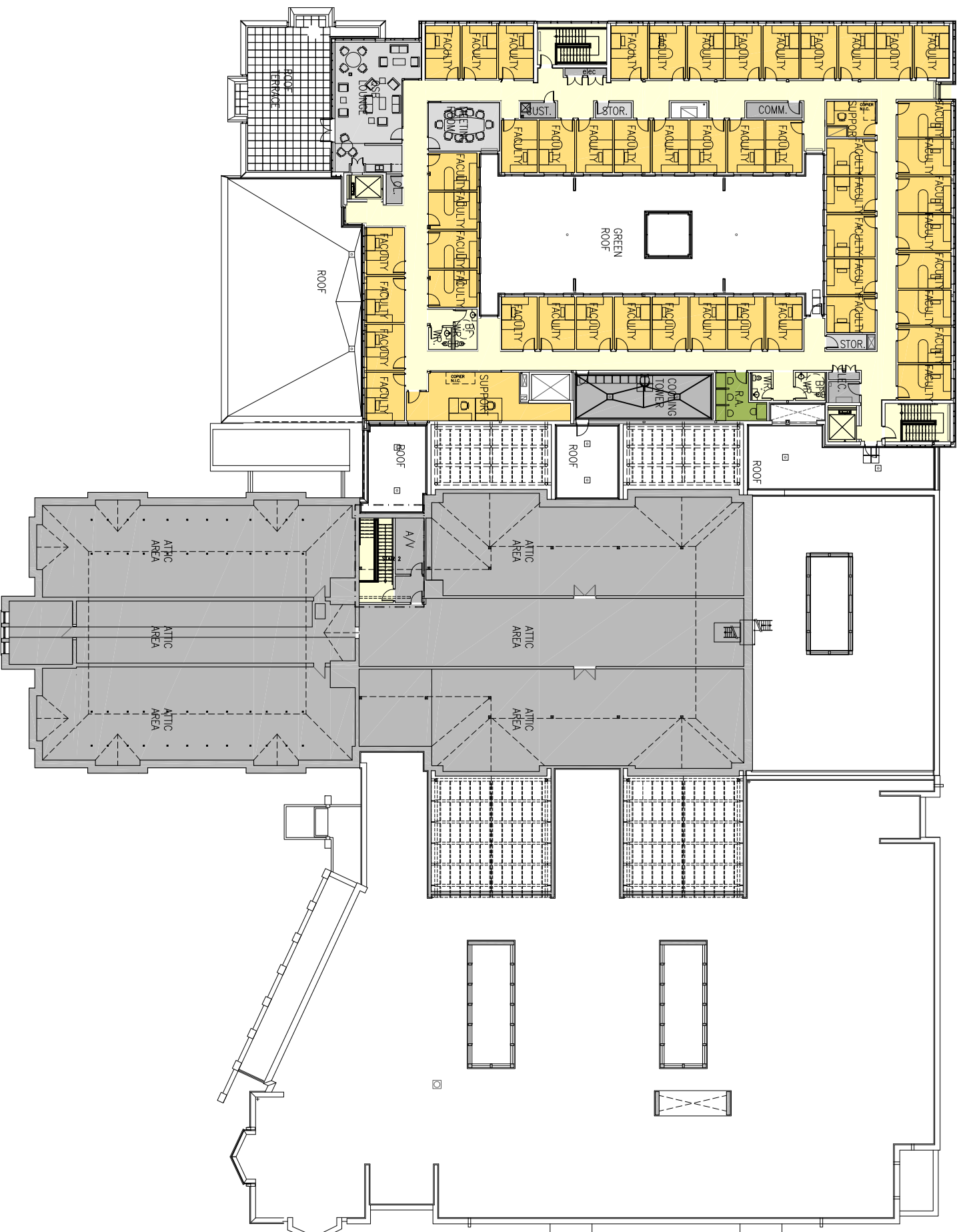
PROPOSED 400 LEVEL

- DEAN'S OFFICE
- DEVELOPMENT & ALUMNI RELATIONS
- BUSINESS OFFICE
- MARKETING AND COMMUNICATIONS
- EMBA
- CAREER CENTRE
- TECHNOLOGY/LABORATORY
- HUMAN RESOURCES
- CLASSROOMS
- COMMERCIAL OFFICE
- COMMERCIAL OFFICE
- CENTRE FOR INTERNATIONAL MANAGEMENT
- COMMERCIAL SOCIETY OFFICE
- PH.D., M.Sc. AND RESEARCH PROGRAMS
- RESEARCH ASSISTANTS
- EXECUTIVE DEVELOPMENT CENTRE
- FULL TIME MBA
- MONIESON CENTRE
- OCBV
- EXECUTIVE DECISION CENTRE
- NEW RESEARCH CENTRE No. 1
- NEW RESEARCH CENTRE No. 2
- MASTERS OF MANAGEMENT PROGRAM
- C.S.F. CENTRE
- FACULTY OFFICES
- COMMON AND BUILDING FACILITIES
- PUBLIC CIRCULATION
- BUILDING SERVICES



Scale: 1:400  
March 18, 2011

QUEEN'S UNIVERSITY  
GOODES HALL EXPANSION



PROPOSED 500 LEVEL

BLOCKING & STACKING

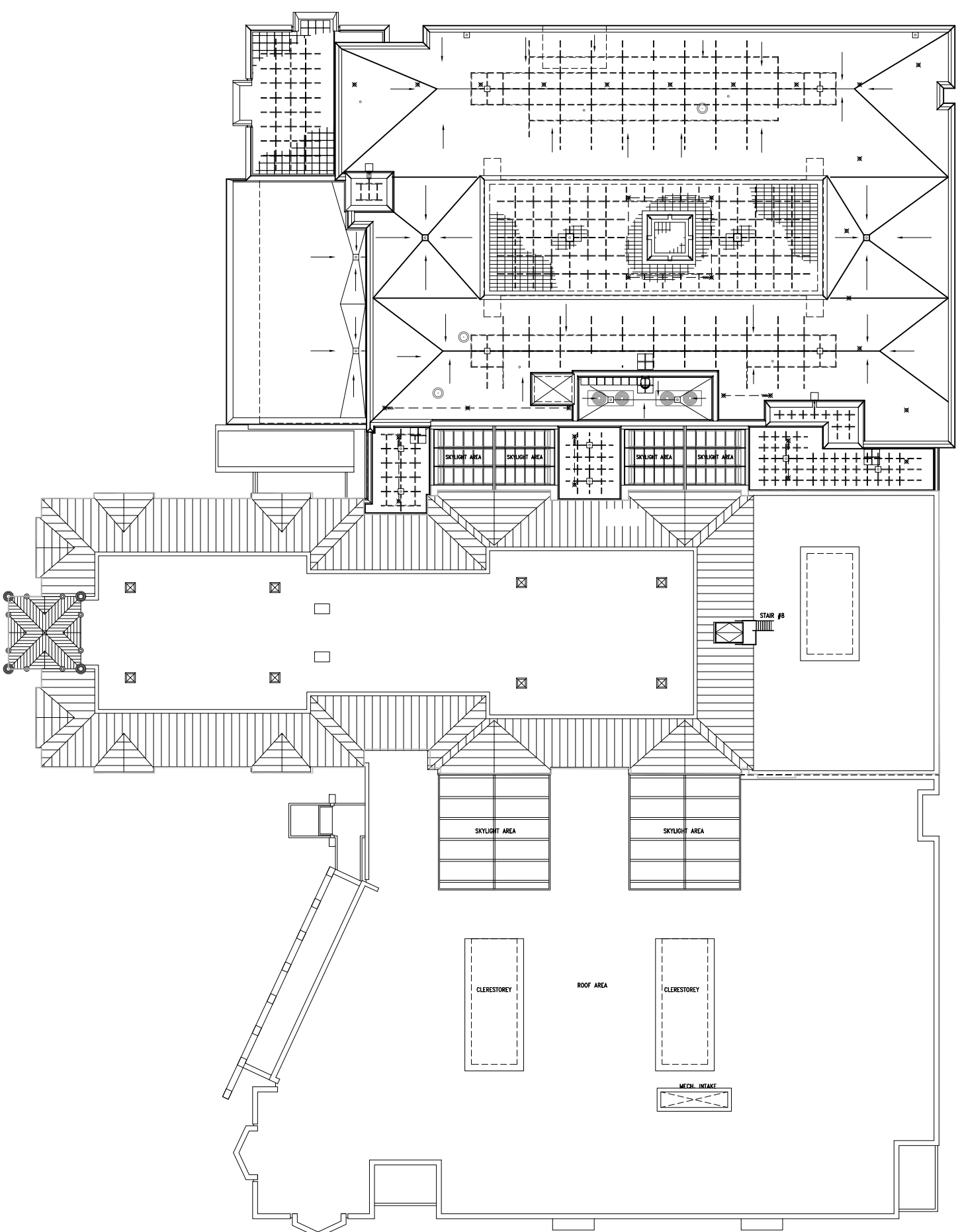
- DEAN'S OFFICE
- DEVELOPMENT & ALUMNI RELATIONS
- BUSINESS OFFICE
- MARKETING AND COMMUNICATIONS
- EMBA
- CAREER CENTRE
- TECHNOLOGY/LABORATORY
- HUMAN RESOURCES
- CLASSROOMS
- COMMERCE OFFICE
- CENTRE FOR INTERNATIONAL MANAGEMENT
- COMMERCE SOCIETY OFFICE
- PH.D. M.Sc. AND RESEARCH PROGRAMS
- RESEARCH ASSISTANTS
- EXECUTIVE DEVELOPMENT CENTRE
- FULL TIME MBA
- MONIESON CENTRE
- OCBV
- EXECUTIVE DECISION CENTRE
- NEW RESEARCH CENTRE No. 1
- NEW RESEARCH CENTRE No. 2
- MASTERS OF MANAGEMENT PROGRAM
- C.S.F. CENTRE
- FACULTY OFFICES
- COMMON AND BUILDING FACILITIES
- PUBLIC CIRCULATION
- BUILDING SERVICES



Scale: 1:400  
March 18, 2011

QUEEN'S UNIVERSITY  
GOODES HALL EXPANSION





PROPOSED ROOF

- DEAN'S OFFICE
- DEVELOPMENT & ALUMNI RELATIONS
- BUSINESS OFFICE
- MARKETING AND COMMUNICATIONS
- EMBA
- CAREER CENTRE
- TECHNOLOGY/LABORATORY
- HUMAN RESOURCES
- CLASSROOMS
- COMMERCE OFFICE
- COMMERCE OFFICE
- CENTRE FOR INTERNATIONAL MANAGEMENT
- COMMERCE SOCIETY OFFICE
- PH.D., M.Sc. AND RESEARCH PROGRAMS
- RESEARCH ASSISTANTS
- EXECUTIVE DEVELOPMENT CENTRE
- FULL TIME MBA
- MONIESON CENTRE
- OCBV
- EXECUTIVE DECISION CENTRE
- NEW RESEARCH CENTRE No. 1
- NEW RESEARCH CENTRE No. 2
- MASTERS OF MANAGEMENT PROGRAM
- C.S.F. CENTRE
- FACULTY OFFICES
- COMMON AND BUILDING FACILITIES
- PUBLIC CIRCULATION
- BUILDING SERVICES



Scale: 1:400  
MARCH 18, 2011

QUEEN'S UNIVERSITY  
GOODES HALL EXPANSION